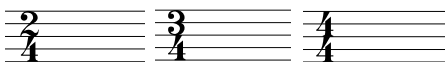


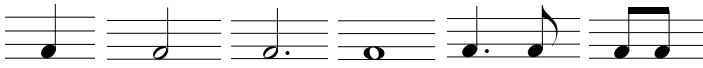
# SCDBA All-District Auditions Sightreading Criteria


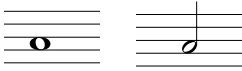
## Middle School SCDBA All-District Sightreading Criteria

**Key:** Concert F, B-flat, E-flat Major.  
Maximum of two (2) keys with a maximum of two key changes.

**Meter:** 

Maximum of one meter change.

**Rhythm:** Basic Patterns 

Percussion Only  | Other Percussion requirements  
Rolls on:   
Flams

**Length:** no longer than 8 measures in 4/4 and 3/4 and no longer than 16 measures in 2/4.

---


---

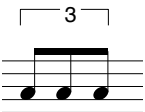
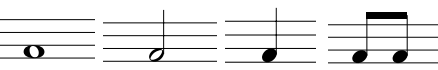
## High School (9/10) SCDBA All-District Band Auditions Sightreading Criteria

**Key:** Concert F, B-flat, E-flat Major and A-flat Major.  
Maximum of two (2) keys with a maximum of two (2) key changes.

**Meter:** 

Maximum of two (2) meters with a maximum of two (2) meter changes.

**Rhythm:** Basic Patterns 

Percussion Only  | Other Percussion requirements  
Rolls on: 

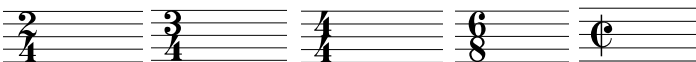
Flams and ruffs

**Length:** no longer than 8 measures in 4/4 and 3/4 and no longer than 16 measures in 2/4 and cut time.

# SCDBA All-District Auditions Sightreading Criteria

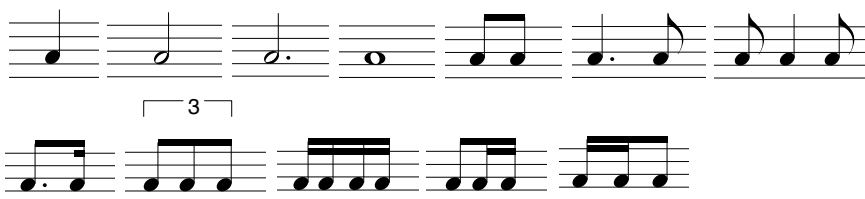
## Senior High (11 / 12) SCDBA All-District Band Auditions Sightreading Criteria

**Key:** Concert F, B-flat, E-flat, A-flat Major.  
Maximum of two (2) key changes.

**Meter:** 

Maximum of two (2) meter changes.

**Rhythm:** Basic Patterns



Other Percussion requirements

Rolls: Same as High School

Flams and ruffs

**Length:** no longer than 8 measures in 4/4 and 3/4 and no longer than 16 measures in 2/4, cut time and 6/8.

# SCDBA All-District Auditions Sightreading Criteria

## Sight-reading Ranges

Middle School

High School (9/10)

Senior High (11/12)

The image displays a musical score for sight-reading ranges across three levels: Middle School, High School (9/10), and Senior High (11/12). The instruments listed on the left are Flute/Piccolo, Oboe, Bassoon, Clarinet, Low Clarinets, Alto Saxophone, Low Saxs, Trumpets, French Horns, Trombone/Euphonium, and Tuba. Each instrument part is represented by a staff with a treble or bass clef and a common time signature (C). The notes are marked with a '1' above them, indicating the first reading. The ranges are indicated by horizontal lines above the notes, showing the progression of difficulty from Middle School to Senior High. For example, the Flute/Piccolo part starts with a note on the first line (C5) in Middle School, moves to the second line (D5) in High School, and to the second space (E5) in Senior High. The Tuba part starts with a note on the first space (C2) in Middle School, moves to the second space (D2) in High School, and to the second line (E2) in Senior High.

Instrument	Middle School	High School (9/10)	Senior High (11/12)
Flute/Piccolo	C5	D5	E5
Oboe	C5	D5	E5
Bassoon	C4	B4	C5
Clarinet	C5	D5	E5
Low Clarinets	C5	D5	E5
Alto Saxophone	C5	D5	E5
Low Saxs	C5	D5	E5
Trumpets	B4	C5	D5
French Horns	B4	C5	D5
Trombone/Euphonium	B4	C5	D5
Tuba	C2	D2	E2